

ARG82028 Sorbitol Assay Kit

Package: 96 wells
Store at: 4°C

Summary

Product Description	ARG82028 Sorbitol Assay Kit is a detection kit for the quantification of Sorbitol Content in tissue extracts, cell lysate and cell culture supernatants.
Tested Reactivity	All
Tested Application	FuncSt
Target Name	Sorbitol
Conjugation Note	Read at 655 nm.
Sensitivity	0.1 mg/ml
Detection Range	0.1 - 5 mg/ml
Sample Type	Tissue extracts, cell lysate and cell culture supernatants.
Sample Volume	160 µl

Application Instructions

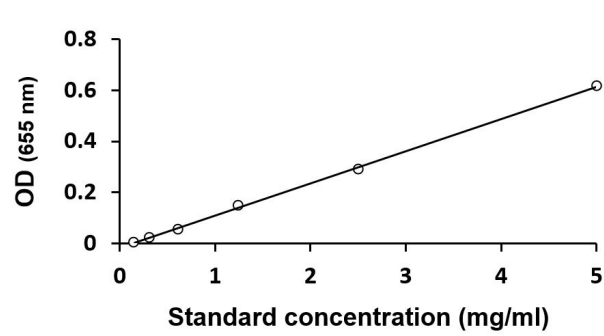
Assay Time	40 min
------------	--------

Properties

Form	96 well
Storage instruction	Store the kit at 2-8°C. Keep microplate wells sealed in a dry bag with desiccants. Do not expose test reagents to heat, sun or strong light during storage and usage. Please refer to the product user manual for detail temperatures of the components.
Note	For laboratory research only, not for drug, diagnostic or other use.

Bioinformation

Background	D-glucitol is the D-enantiomer of glucitol (also known as D-sorbitol). It has a role as a sweetening agent, a laxative, a metabolite, a cathartic, a human metabolite, a food humectant, a <i>Saccharomyces cerevisiae</i> metabolite, an <i>Escherichia coli</i> metabolite and a mouse metabolite.
Function	A polyhydric alcohol with about half the sweetness of sucrose. Sorbitol occurs naturally and is also produced synthetically from glucose. It was formerly used as a diuretic and may still be used as a laxative and in irrigating solutions for some surgical procedures.



ARG82028 Sorbitol Assay Kit typical data demonstration image

ARG82028 Sorbitol Assay Kit results of a typical data with optical density reading at 655 nm.