

ARG82150 Creatine Kinase Activity Assay Kit (Colorimetric)

Package: 100 tests

Store at: -20°C

Summary

Product Description	ARG82150 Creatine Kinase Activity Assay Kit (Colorimetric) can be used to measure Creatine Kinase activity in serum and plasma.
Tested Reactivity	Hu, Ms, Rat, All
Tested Application	FuncSt
Target Name	Creatine Kinase
Conjugation Note	Read at 340 nm
Sensitivity	5 U/L
Detection Range	5 - 300 U/L
Sample Type	serum and plasma
Sample Volume	10 µl
Alternate Names	CKMM; M-CK; Creatine kinase M chain; EC 2.7.3.2; Creatine kinase M-type

Application Instructions

Application Note	Please note that this kit does not include a microplate.
Assay Time	5 min

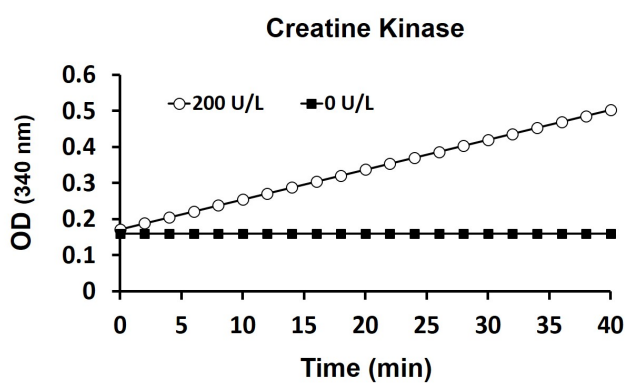
Properties

Form	Liquid
Storage instruction	Store the kit at -20°C. Do not expose test reagents to heat, sun or strong light during storage and usage. Please refer to the product user manual for detail temperatures of the components.
Note	For laboratory research only, not for drug, diagnostic or other use.

Bioinformation

Gene Symbol	CKM
Gene Full Name	creatine kinase, muscle
Background	The protein encoded by this gene is a cytoplasmic enzyme involved in energy homeostasis and is an important serum marker for myocardial infarction. The encoded protein reversibly catalyzes the transfer of phosphate between ATP and various phosphogens such as creatine phosphate. It acts as a homodimer in striated muscle as well as in other tissues, and as a heterodimer with a similar brain isozyme in heart. The encoded protein is a member of the ATP:guanido phosphotransferase protein family. [provided by RefSeq, Jul 2008]
Function	Reversibly catalyzes the transfer of phosphate between ATP and various phosphogens (e.g. creatine phosphate). Creatine kinase isoenzymes play a central role in energy transduction in tissues with large, fluctuating energy demands, such as skeletal muscle, heart, brain and spermatozoa. [UniProt]

Images



ARG82150 Creatine Kinase Activity Assay Kit (Colorimetric) enzyme kinetics graph

Kinetics of 0 and 200 U/L Creatine Kinase reaction, using ARG82150 Creatine Kinase Activity Assay Kit (Colorimetric).