

## ARG82240 Mouse TLR1 ELISA Kit

Package: 96 wells  
Store at: 4°C

### Summary

Product Description	ARG82240 Mouse TLR1 ELISA Kit is an Enzyme Immunoassay kit for the quantification of Mouse TLR1 in serum and plasma.
Tested Reactivity	Ms
Tested Application	ELISA
Specificity	The following recombinant Mouse proteins were tested and exhibited no cross-reactivity or interference: IL1 beta, IL2, IL4, IL5, IL6, IL8, IL10, IL15, IFN gamma, TLR2, TLR3, TLR4, TNF alpha.
Target Name	TLR1
Conjugation	HRP
Conjugation Note	Read at 450 nm.
Sensitivity	47 pg/ml
Sample Type	Serum and plasma.
Standard Range	94 - 6000 pg/ml
Sample Volume	100 µl
Precision	Intra-Assay CV: 6% Inter-Assay CV: 11%
Alternate Names	CD281; CD antigen CD281; Toll/interleukin-1 receptor-like protein; TIL; Toll-like receptor 1; rsc786; TIL. LPRS5

### Application Instructions

Assay Time	3 hours
------------	---------

### Properties

Form	96 well
Storage instruction	Store the kit at 2-8°C. Keep microplate wells sealed in a dry bag with desiccants. Do not expose test reagents to heat, sun or strong light during storage and usage. Please refer to the product user manual for detail temperatures of the components.
Note	For laboratory research only, not for drug, diagnostic or other use.

### Bioinformation

Gene Symbol	TLR1
Gene Full Name	toll-like receptor 1
Background	The protein encoded by this gene is a member of the Toll-like receptor (TLR) family which plays a fundamental role in pathogen recognition and activation of innate immunity. TLRs are highly conserved from Drosophila to humans and share structural and functional similarities. They recognize pathogen-

associated molecular patterns (PAMPs) that are expressed on infectious agents, and mediate the production of cytokines necessary for the development of effective immunity. The various TLRs exhibit different patterns of expression. This gene is ubiquitously expressed, and at higher levels than other TLR genes. Different length transcripts presumably resulting from use of alternative polyadenylation site, and/or from alternative splicing, have been noted for this gene. [provided by RefSeq, Jul 2008]

#### Function

Participates in the innate immune response to microbial agents. Specifically recognizes diacylated and triacylated lipopeptides. Cooperates with TLR2 to mediate the innate immune response to bacterial lipoproteins or lipopeptides. Acts via MYD88 and TRAF6, leading to NF-kappa-B activation, cytokine secretion and the inflammatory response (By similarity). [UniProt]

#### Highlight

Related products:

[TLR1 ELISA Kits:](#)

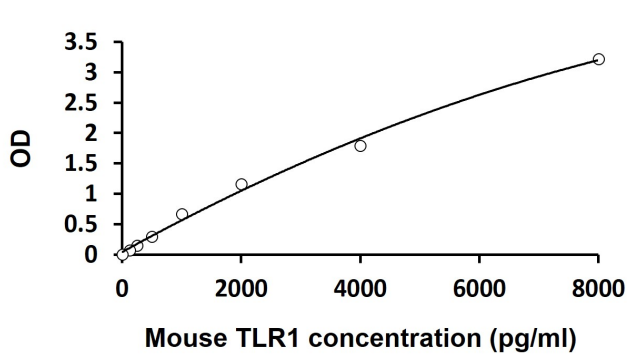
New ELISA data calculation tool:

[Simplify the ELISA analysis by GainData](#)

#### Cellular Localization

Cell membrane; Single-pass type I membrane protein. Cytoplasmic vesicle, phagosome membrane; Single-pass type I membrane protein. Membrane raft. Golgi apparatus. Note=Does not reside in lipid rafts before stimulation but accumulates increasingly in the raft upon the presence of the microbial ligand. In response to triacylated lipoproteins, TLR2:TLR1 heterodimers are recruited in lipid rafts, this recruitment determine the intracellular targeting to the Golgi apparatus. [UniProt]

## Images



ARG82240 Mouse TLR1 ELISA Kit standard curve image

ARG82240 Mouse TLR1 ELISA Kit results of a typical standard run with optical density reading at 450 nm.