

ARG82387 Mouse CNTN1 / Contactin 1 ELISA Kit

Package: 96 wells
Store at: 4°C

Component

Cat. No.	Component Name	Package	Temp
ARG82387-001	Antibody-coated microplate	8 X 12 strips	4°C. Unused strips should be sealed tightly in the air-tight pouch.
ARG82387-002	Standard	2 X 10 ng/vial	4°C
ARG82387-003	Standard/Sample diluent	30 ml (Ready to use)	4°C
ARG82387-004	Antibody conjugate concentrate (100X)	1 vial (100 µl)	4°C
ARG82387-005	Antibody diluent buffer	12 ml (Ready to use)	4°C
ARG82387-006	HRP-Streptavidin concentrate (100X)	1 vial (100 µl)	4°C
ARG82387-007	HRP-Streptavidin diluent buffer	12 ml (Ready to use)	4°C
ARG82387-008	25X Wash buffer	20 ml	4°C
ARG82387-009	TMB substrate	10 ml (Ready to use)	4°C (Protect from light)
ARG82387-010	STOP solution	10 ml (Ready to use)	4°C
ARG82387-011	Plate sealer	4 strips	Room temperature

Summary

Product Description	ARG82387 Mouse CNTN1 / Contactin 1 ELISA Kit is an Enzyme Immunoassay kit for the quantification of Mouse CNTN1 / Contactin 1 in serum, plasma (EDTA, heparin, citrate) and cell culture supernatants.
Tested Reactivity	Ms
Tested Application	ELISA
Target Name	CNTN1 / Contactin 1
Conjugation	HRP
Conjugation Note	Substrate: TMB and read at 450 nm.
Sensitivity	78 pg/ml
Sample Type	Serum, plasma (EDTA, heparin, citrate) and cell culture supernatants.
Standard Range	156 - 10000 pg/ml
Sample Volume	100 µl
Precision	Intra-Assay CV: 4.9% Inter-Assay CV: 7.2%

Alternate Names	Contactin-1; F3; Glycoprotein gp135; GP135; Neural cell surface protein F3; MYPCN
-----------------	---

Application Instructions

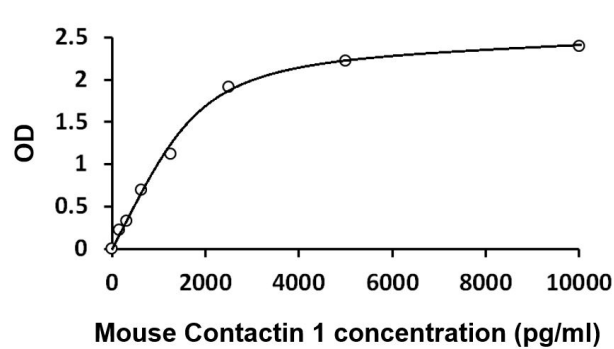
Assay Time	~ 5 hours
------------	-----------

Properties

Form	96 well
Storage instruction	Store the kit at 2-8°C. Keep microplate wells sealed in a dry bag with desiccants. Do not expose test reagents to heat, sun or strong light during storage and usage. Please refer to the product user manual for detail temperatures of the components.
Note	For laboratory research only, not for drug, diagnostic or other use.

Bioinformation

Gene Symbol	CNTN1
Gene Full Name	contactin 1
Background	The protein encoded by this gene is a member of the immunoglobulin superfamily. It is a glycosylphosphatidylinositol (GPI)-anchored neuronal membrane protein that functions as a cell adhesion molecule. It may play a role in the formation of axon connections in the developing nervous system. Multiple alternatively spliced transcript variants encoding different isoforms have been found for this gene. [provided by RefSeq, Dec 2011]
Function	Contactins mediate cell surface interactions during nervous system development. Involved in the formation of paranodal axo-glial junctions in myelinated peripheral nerves and in the signaling between axons and myelinating glial cells via its association with CNTNAP1. Participates in oligodendrocytes generation by acting as a ligand of NOTCH1. Its association with NOTCH1 promotes NOTCH1 activation through the released notch intracellular domain (NICD) and subsequent translocation to the nucleus. Interaction with TNR induces a repulsion of neurons and an inhibition of neurite outgrowth (By similarity). [UniProt]
Highlight	Related products: Contactin antibodies ; Contactin ELISA Kits ; New ELISA data calculation tool: Simplify the ELISA analysis by GainData
Cellular Localization	Isoform 1: Cell membrane; Lipid-anchor, GPI-anchor; Extracellular side. Isoform 2: Cell membrane; Lipid-anchor, GPI-anchor; Extracellular side. [UniProt]



ARG82387 Mouse CNTN1 / Contactin 1 ELISA Kit standard curve image

ARG82387 Mouse CNTN1 / Contactin 1 ELISA Kit results of a typical standard run with optical density reading at 450 nm.