

ARG82669 Monkey Apolipoprotein AI ELISA Kit

Package: 96 wells
Store at: 4°C

Summary

Product Description	ARG82669 Monkey Apolipoprotein AI ELISA Kit is an Enzyme Immunoassay kit for the quantification of Monkey Apolipoprotein AI in serum, plasma and cell culture supernatants.
Tested Reactivity	Mk
Tested Application	ELISA
Target Name	Apolipoprotein AI
Conjugation	HRP
Conjugation Note	Substrate: TMB and read at 450 nm.
Sensitivity	0.63 ng/ml
Sample Type	Serum, plasma and cell culture supernatants.
Standard Range	1.25 - 80 ng/ml
Sample Volume	100 µl
Precision	CV: less than 10%
Alternate Names	ApoA-I; ProapoA-I; Apo-AI; Apolipoprotein A-I; Apolipoprotein A1; 1-242

Application Instructions

Assay Time	~ 3.5 hours
------------	-------------

Properties

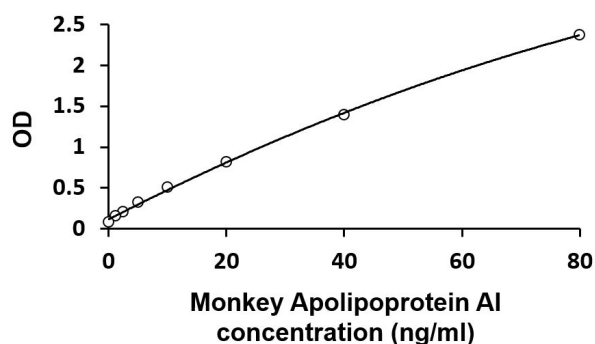
Form	96 well
Storage instruction	Store the kit at 2-8°C. Keep microplate wells sealed in a dry bag with desiccants. Do not expose test reagents to heat, sun or strong light during storage and usage. Please refer to the product user manual for detail temperatures of the components.
Note	For laboratory research only, not for drug, diagnostic or other use.

Bioinformation

Gene Symbol	APOA1
Gene Full Name	apolipoprotein A-I
Background	This gene encodes apolipoprotein A-I, which is the major protein component of high density lipoprotein (HDL) in plasma. The encoded preproprotein is proteolytically processed to generate the mature protein, which promotes cholesterol efflux from tissues to the liver for excretion, and is a cofactor for lecithin cholesterolacyltransferase (LCAT), an enzyme responsible for the formation of most plasma cholesteryl esters. This gene is closely linked with two other apolipoprotein genes on chromosome 11. Defects in this gene are associated with HDL deficiencies, including Tangier disease, and with systemic non-neuropathic amyloidosis. Alternative splicing results in multiple transcript variants, at least one of which encodes a preproprotein. [provided by RefSeq, Dec 2015]

Function	Participates in the reverse transport of cholesterol from tissues to the liver for excretion by promoting cholesterol efflux from tissues and by acting as a cofactor for the lecithin cholesterol acyltransferase (LCAT). As part of the SPAP complex, activates spermatozoa motility. [UniProt]
Highlight	<p>Related products:</p> <p>Apolipoprotein antibodies; Apolipoprotein ELISA Kits;</p> <p>New ELISA data calculation tool:</p> <p>Simplify the ELISA analysis by GainData</p>
PTM	<p>Glycosylated.</p> <p>Palmitoylated.</p> <p>Phosphorylation sites are present in the extracellular medium. [UniProt]</p>
Cellular Localization	Secreted. [UniProt]

Images



ARG82669 Monkey Apolipoprotein AI ELISA Kit standard curve image

ARG82669 Monkey Apolipoprotein AI ELISA Kit results of a typical standard run with optical density reading at 450 nm.