

ARG82774 Human Peptide YY ELISA Kit

Package: 96 wells
Store at: 4°C

Summary

Product Description	ARG82774 Human Peptide YY ELISA Kit is an Enzyme Immunoassay kit for the quantification of Human Peptide YY (3-36) and Human Peptide YY (1-36) in serum and plasma.
Tested Reactivity	Hu
Tested Application	ELISA
Specificity	Cross Reactivity: Human Peptide YY (3-36): 100% Human Peptide YY: 100% Mouse, Rat, Pig and Dog Peptide YY: 26% Mouse, Rat, Pig and Dog Peptide YY (3-36): 10% Pig Neuropeptide Y: 11% Human Pancreatic Polypeptide, Human Insulin, Human Glucagon, Human Amylin Amide and Substance P: 0% Note: The standard in the kit is Human Peptide YY (3-36) peptide, and this kit also detects Human Peptide YY (1-36).
Target Name	Peptide YY
Conjugation	HRP
Conjugation Note	Substrate: TMB and read at 450 nm.
Sensitivity	0.079 ng/ml
Detection Range	Linear range: 0.079 - 0.88 ng/ml
Sample Type	Serum and plasma
Standard Range	0.01 - 100 ng/ml
Sample Volume	50 µl
Alternate Names	Peptide tyrosine tyrosine; PYY; PYY-I; PYY1; Peptide YY; PYY-II; 3-36

Application Instructions

Assay Time	~ 4 hours
------------	-----------

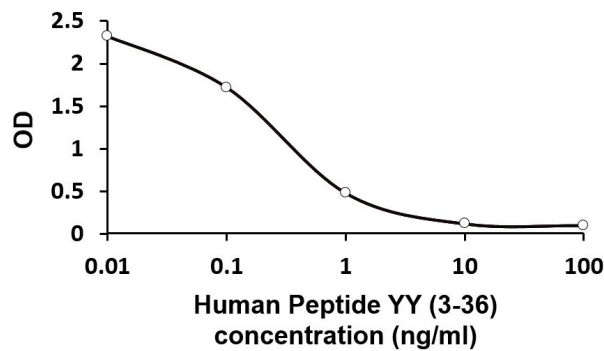
Properties

Form	96 well
Storage instruction	Store the kit at 2-8°C. Keep microplate wells sealed in a dry bag with desiccants. Do not expose test reagents to heat, sun or strong light during storage and usage. Please refer to the product user manual for detail temperatures of the components.
Note	For laboratory research only, not for drug, diagnostic or other use.

Bioinformation

Gene Symbol	PYY
Gene Full Name	peptide YY
Background	This gene encodes a member of the neuropeptide Y (NPY) family of peptides. The encoded preproprotein is proteolytically processed to generate two alternative peptide products that differ in length by three amino acids. These peptides, secreted by endocrine cells in the gut, exhibit different binding affinities for each of the neuropeptide Y receptors. Binding of the encoded peptides to these receptors mediates regulation of pancreatic secretion, gut mobility and energy homeostasis. Rare variations in this gene could increase susceptibility to obesity and elevated serum levels of the encoded peptides may be associated with anorexia nervosa. [provided by RefSeq, Feb 2016]
Function	This gut peptide inhibits exocrine pancreatic secretion, has a vasoconstrictory action and inhibits jejunal and colonic mobility. [UniProt]
Highlight	Related news: Studying obesity and appetite control by quantifying orexigenic and anorexigenic hormones;
PTM	The peptide YY form is cleaved at Pro-30 by the prolyl endopeptidase FAP (seprase) activity (in vitro) to generate peptide YY(3-36). [UniProt]
Cellular Localization	Secreted. [UniProt]

Images



ARG82774 Human Peptide YY ELISA Kit standard curve image

ARG82774 Human Peptide YY ELISA Kit results of a typical standard run with optical density reading at 450 nm.