

**ARG82905**  
**Human SDMA ELISA Kit**Package: 96 wells  
Store at: 4°C

### Summary

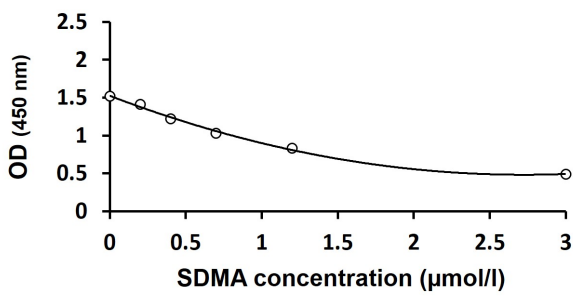
Product Description	ARG82905 Human SDMA ELISA Kit is an enzyme immunoassay kit for the quantification of SDMA in serum and plasma (EDTA).
Tested Reactivity	Hu
Tested Application	ELISA
Specificity	Cross Reactivity (%): SDMA - 100% ADMA - 0.74% NMMA - 0.76% Homoarginine - 0.04% Arginine - 0.01%
Target Name	SDMA
Conjugation	HRP
Conjugation Note	Substrate: TMB and read at 450 nm
Sensitivity	0.03 µmol/l
Sample Type	Serum and plasma (EDTA).
Standard Range	0.2 - 3.0 µmol/l
Sample Volume	20 µl

### Application Instructions

Assay Time	~ 2.5 hours
------------	-------------

### Properties

Form	96 well
Storage instruction	Store the kit at 2-8°C. Keep microplate wells sealed in a dry bag with desiccants. Do not expose test reagents to heat, sun or strong light during storage and usage. Please refer to the product user manual for detail temperatures of the components.
Note	For laboratory research only, not for drug, diagnostic or other use.



ARG82905 Human SDMA ELISA Kit standard curve image

ARG82905 Human SDMA ELISA Kit results of a typical standard run with optical density reading at 450 nm.