

## ARG83010 Mouse IL17F ELISA Kit

Package: 96 wells  
Store at: 4°C

### Summary

Product Description	ARG83010 Mouse IL17F ELISA Kit is an Enzyme Immunoassay kit for the quantification of Mouse IL17F in serum, plasma (heparin), ascites, urine and cell culture supernatants.
Tested Reactivity	Ms
Tested Application	ELISA
Specificity	Not cross-reacts with: Human IL2, IL4, IL6, IL8, IL10, IL17F. Mouse IL2, IL4, IL6, IL10, TNF beta, IL17B, IL17D, IL17E. Porcine IL17F.
Target Name	IL17F
Conjugation	HRP
Conjugation Note	Substrate: TMB and read at 450 nm.
Sensitivity	11.7 pg/ml
Sample Type	Serum, plasma (heparin), ascites, urine and cell culture supernatants.
Standard Range	23.44 - 1500 pg/ml
Sample Volume	100 µl
Precision	Intra-Assay CV: less than 10% Inter-Assay CV: less than 10%
Alternate Names	IL17F, Interleukin 17F, IL 17F, ML 1, ML1, Interleukin 17F, Cytokine ML 1, CANDF6, IL17A

### Application Instructions

Assay Time	~ 4 hours
------------	-----------

### Properties

Form	96 well
Storage instruction	Store the kit at 2-8°C. Keep microplate wells sealed in a dry bag with desiccants. Do not expose test reagents to heat, sun or strong light during storage and usage. Please refer to the product user manual for detail temperatures of the components.
Note	For laboratory research only, not for drug, diagnostic or other use.

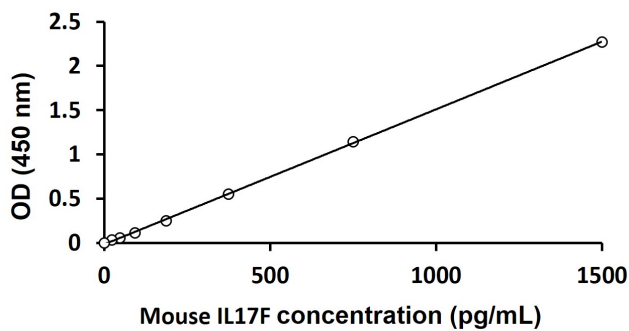
### Bioinformation

Gene Symbol	IL17F
Gene Full Name	Interleukin 17F
Background	The protein encoded by this gene is a cytokine that shares sequence similarity with IL17. This cytokine is expressed by activated T cells, and has been shown to stimulate the production of several other

cytokines, including IL6, IL8, and CSF2/GM-CSF. This cytokine is also found to inhibit the angiogenesis of endothelial cells and induce endothelial cells to produce IL2, TGFB1/TGFB, and monocyte chemoattractant protein-1. [provided by RefSeq, Jul 2008]

Function	Via IL17RC induces transcriptional activation of IL33, a potent cytokine that stimulates group 2 innate lymphoid cells and adaptive T-helper 2 cells involved in pulmonary allergic response to fungi. Likely via IL17RC, promotes sympathetic innervation of peripheral organs by coordinating the communication between gamma-delta T cells and parenchymal cells. Stimulates sympathetic innervation of thermogenic adipose tissue by driving TGFB1 expression. [UniProt]
Highlight	Related products: <a href="#">IL17 antibodies</a> ; <a href="#">IL17 ELISA Kits</a> ; <a href="#">IL17 recombinant proteins</a> ; New ELISA data calculation tool: <a href="#">Simplify the ELISA analysis by GainData</a>
PTM	Disulfide bond, Glycoprotein. [UniProt]
Cellular Localization	Secreted. [UniProt]

Images



ARG83010 Mouse IL17F ELISA Kit standard curve image

ARG83010 Mouse IL17F ELISA Kit results of standard run with optical density reading at 450 nm