

ARG83220 Mouse Cathepsin E ELISA Kit

Package: 96 wells
Store at: 4°C

Summary

Product Description	ARG83220 Mouse Cathepsin E ELISA Kit is an Enzyme Immunoassay kit for the quantification of Mouse Cathepsin E in Serum, Plasma and Cell culture supernatants.
Tested Reactivity	Ms
Tested Application	ELISA
Specificity	There is no detectable cross-reactivity with other relevant proteins.
Target Name	Cathepsin E
Conjugation	HRP
Conjugation Note	Substrate: TMB and read at 450 nm.
Sensitivity	25 pg/ml
Detection Range	156 pg/ml - 10,000 pg/ml
Sample Type	Serum, Plasma and Cell culture supernatants
Precision	Intra-Assay CV: 4.5% Inter-Assay CV: 4.8%
Alternate Names	EC 3.4.23.34; CATE; Cathepsin E

Application Instructions

Assay Time	~ 5 hours
------------	-----------

Properties

Form	96 well
Storage instruction	Store the kit at 2-8°C. Keep microplate wells sealed in a dry bag with desiccants. Do not expose test reagents to heat, sun or strong light during storage and usage. Please refer to the product user manual for detail temperatures of the components.
Note	For laboratory research only, not for drug, diagnostic or other use.

Bioinformation

Gene Symbol	CTSE
Gene Full Name	cathepsin E
Background	This gene encodes a member of the A1 family of peptidases. Alternative splicing of this gene results in multiple transcript variants. At least one of these variants encodes a preproprotein that is proteolytically processed to generate the mature enzyme. This enzyme, an aspartic endopeptidase, may be involved in antigen processing and the maturation of secretory proteins. Elevated expression of this gene has been observed in neurodegeneration. [provided by RefSeq, Nov 2015]
Function	May have a role in immune function. Probably involved in the processing of antigenic peptides during

MHC class II-mediated antigen presentation. May play a role in activation-induced lymphocyte depletion in the thymus, and in neuronal degeneration and glial cell activation in the brain. [UniProt]

PTM

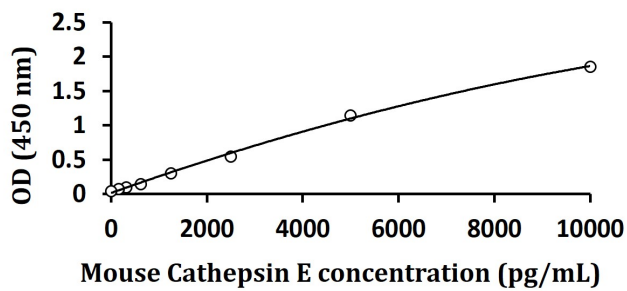
Glycosylated. The nature of the carbohydrate chain varies between cell types. In fibroblasts, the proenzyme contains a high mannose-type oligosaccharide, while the mature enzyme contains a complex-type oligosaccharide. In erythrocyte membranes, both the proenzyme and mature enzyme contain a complex-type oligosaccharide.

Two forms are produced by autocatalytic cleavage, form I begins at Ile-54, form II begins at Thr-57. [UniProt]

Cellular Localization

Endosome. Note=The proenzyme is localized to the endoplasmic reticulum and Golgi apparatus, while the mature enzyme is localized to the endosome. [UniProt]

Images



ARG83220 Mouse Cathepsin E ELISA Kit standard curve image

ARG83220 Mouse Cathepsin E ELISA Kit results of a typical standard run with optical density reading at 450 nm.