

ARG83266 Human CRELD1 ELISA Kit

Package: 96 wells
Store at: 4°C

Summary

Product Description	ARG83266 Human CRELD1 ELISA Kit is an Enzyme Immunoassay kit for the quantification of Human CRELD1 in Serum, Plasma and Cell culture supernatants.
Tested Reactivity	Hu
Tested Application	ELISA
Specificity	There is no detectable cross-reactivity with other relevant proteins.
Target Name	CRELD1
Conjugation	HRP
Conjugation Note	Substrate: TMB and read at 450 nm.
Sensitivity	13 pg/ml
Detection Range	93.7 pg/ml - 6,000 pg/ml
Sample Type	Serum, Plasma and Cell culture supernatants
Precision	Intra-Assay CV: 4.2% Inter-Assay CV: 4.4%
Alternate Names	CRELD1; Cysteine Rich With EGF Like Domains 1; CIRRN; Protein Disulfide Isomerase CRELD1; AVSD2; Cysteine-Rich With EGF-Like Domain Protein 1; Atrioventricular Septal Defect 2; EC 5.3.4.1

Application Instructions

Assay Time	~ 5 hours
------------	-----------

Properties

Form	96 well
Storage instruction	Store the kit at 2-8°C. Keep microplate wells sealed in a dry bag with desiccants. Do not expose test reagents to heat, sun or strong light during storage and usage. Please refer to the product user manual for detail temperatures of the components.
Note	For laboratory research only, not for drug, diagnostic or other use.

Bioinformation

Gene Symbol	CRELD1
Gene Full Name	Cysteine Rich With EGF Like Domains 1
Background	This gene encodes a member of a subfamily of epidermal growth factor-related proteins. The encoded protein is characterized by a cysteine-rich with epidermal growth factor-like domain. This protein may function as a cell adhesion molecule. Mutations in this gene are the cause of atrioventricular septal defect. Alternate splicing results in multiple transcript variants.
Function	Promotes the localization of acetylcholine receptors (AChRs) to the plasma membrane (By similarity).

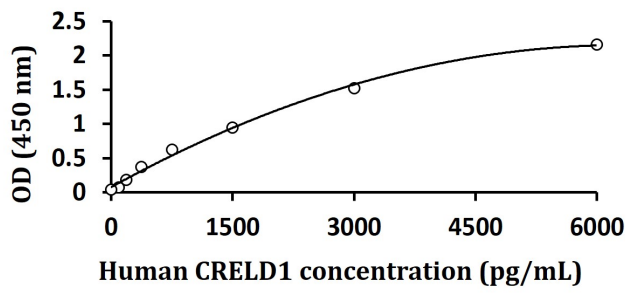
PTM

Disulfide bond, Glycoprotein

Cellular Localization

Membrane

Images



ARG83266 Human CRELD1 ELISA Kit standard curve image

ARG83266 Human CRELD1 ELISA Kit results of a typical standard run with optical density reading at 450 nm.
