

## ARG83288 Human GCNT1 ELISA Kit

Package: 96 wells  
Store at: 4°C

### Summary

Product Description	ARG83288 Human GCNT1 ELISA Kit is an Enzyme Immunoassay kit for the quantification of Human GCNT1 in Serum, Plasma and Cell culture supernatants.
Tested Reactivity	Hu
Tested Application	ELISA
Specificity	There is no detectable cross-reactivity with other relevant proteins.
Target Name	GCNT1
Conjugation	HRP
Conjugation Note	Substrate: TMB and read at 450 nm.
Sensitivity	15 pg/ml
Detection Range	62.5 pg/ml - 4,000 pg/ml
Sample Type	Serum, Plasma and Cell culture supernatants
Precision	Intra-Assay CV: 4.4% Inter-Assay CV: 5.6%
Alternate Names	NAGCT2; Core 2 GNT; G6NT; C2GNT1; Core 2-branching enzyme; Core2-GlcNAc-transferase; NACGT2; C2GNT; EC 2.4.1.102; C2GNT-L; Beta-1,3-galactosyl-O-glycosyl-glycoprotein beta-1,6-N-acetylglucosaminyltransferase

### Application Instructions

Assay Time	~ 5 hours
------------	-----------

### Properties

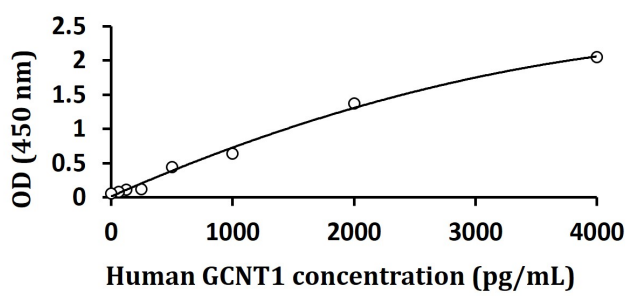
Form	96 well
Storage instruction	Store the kit at 2-8°C. Keep microplate wells sealed in a dry bag with desiccants. Do not expose test reagents to heat, sun or strong light during storage and usage. Please refer to the product user manual for detail temperatures of the components.
Note	For laboratory research only, not for drug, diagnostic or other use.

### Bioinformation

Gene Symbol	GCNT1
Gene Full Name	glucosaminyl (N-acetyl) transferase 1, core 2
Background	This gene is a member of the beta-1,6-N-acetylglucosaminyltransferase gene family. It is essential to the formation of Gal beta 1-3(GlcNAc beta 1-6)GalNAc structures and the core 2 O-glycan branch. The gene coding this enzyme was originally mapped to 9q21, but was later localized to 9q13. Multiple alternatively spliced variants, encoding the same protein, have been identified. [provided by RefSeq, Jul 2008]

Function	Glycosyltransferase that catalyzes the transfer of an N-acetylglucosamine moiety onto mucin-type core 1 O-glycan to form the branched mucin-type core 2 O-glycan. Mucin-type core 2 O-glycans play an important role in leukocyte extravasation as they serve as scaffolds for the display of the selectin ligand sialyl Lewis X by leukocytes. [UniProt]
Cellular Localization	Golgi apparatus membrane; Single-pass type II membrane protein. Note=Also detected in the trans-Golgi network. [UniProt]

Images



ARG83288 Human GCNT1 ELISA Kit standard curve image

ARG83288 Human GCNT1 ELISA Kit results of a typical standard run with optical density reading at 450 nm.