

ARG83290 Mouse CD300LG ELISA Kit

Package: 96 wells
Store at: 4°C

Summary

Product Description	ARG83290 Mouse CD300LG ELISA Kit is an Enzyme Immunoassay kit for the quantification of Mouse CD300LG in Serum, Plasma and Cell culture supernatants.
Tested Reactivity	Ms
Tested Application	ELISA
Specificity	There is no detectable cross-reactivity with other relevant proteins.
Target Name	CD300LG
Conjugation	HRP
Conjugation Note	Substrate: TMB and read at 450 nm.
Sensitivity	15 pg/ml
Detection Range	156 pg/ml - 10,000 pg/ml
Sample Type	Serum, Plasma and Cell culture supernatants
Precision	Intra-Assay CV: 4.0% Inter-Assay CV: 4.3%
Alternate Names	CD300LG; CD300 Molecule Like Family Member G; CLM9; Triggering Receptor Expressed On Myeloid Cells 4; CD300 Antigen-Like Family Member G; CMRF35-Like Molecule 9; TREM-4; Trem4; CLM-9; TREM4; CD300 Molecule-Like Family Member G; CD300 Antigen Like Family Member G; CD300g Antigen; Nepmucin; NEPMUCIN

Application Instructions

Assay Time	~ 5 hours
------------	-----------

Properties

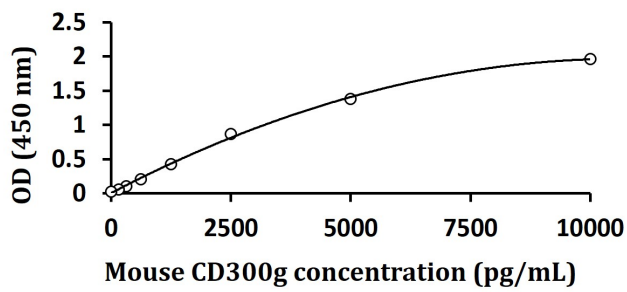
Form	96 well
Storage instruction	Store the kit at 2-8°C. Keep microplate wells sealed in a dry bag with desiccants. Do not expose test reagents to heat, sun or strong light during storage and usage. Please refer to the product user manual for detail temperatures of the components.
Note	For laboratory research only, not for drug, diagnostic or other use.

Bioinformation

Gene Symbol	CD300LG
Gene Full Name	CD300 Molecule Like Family Member G
Background	Members of the CD300 (see MIM 606786)-like (CD300L) family, such as CD300LG, are widely expressed on hematopoietic cells. All CD300L proteins are type I cell surface glycoproteins that contain a single immunoglobulin (Ig) V-like domain.

Function	Receptor which may mediate L-selectin-dependent lymphocyte rollings. Binds SELL in a calcium dependent manner. Binds lymphocyte.
PTM	Disulfide bond, Glycoprotein
Cellular Localization	Cell membrane, Endosome, Membrane

Images



ARG83290 Mouse CD300LG ELISA Kit standard curve image

ARG83290 Mouse CD300LG ELISA Kit results of a typical standard run with optical density reading at 450 nm.